

CERTIFIED LAND CORNER RECORDATION

DESCRIPTION OF CORNER EVIDENCE FOUND, AND ORIGINAL RECORD (If known)

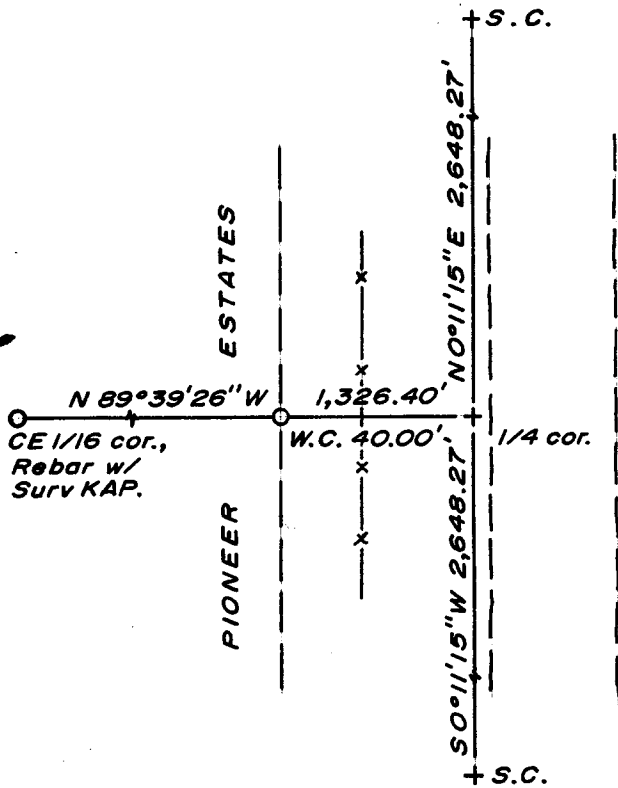
LOCATION
 $\frac{1}{4}$
 S.34 S.35
 T.15N., R.67W.
 6th P.M.

No evidence of corner found.
 Corner re-established by single proportionate measurement.
 G.L.O. record - Granite Boulder, 15 x 8 x 7 (1870).

DESCRIPTION OF MONUMENT AND ACCESSORIES ESTABLISHED TO PERPETUATE THE ORIGINAL LOCATION OF THIS CORNER:

At the corner: No monument set.
 Accessories: A $1\frac{1}{2}$ " dia. x 30" long iron pipe with brass cap, set and stamped as a Witness Corner, bears N 89°39'26" W, 40.00 feet distant.

SKETCH, WITH COURSE AND DISTANCE TO ADJACENT CORNER IF DETERMINED IN THIS SURVEY.
 (May Sketch or Paste Reproduction on Reverse Side.)



Brass cap set 4" above ground.

Brass cap stamped:

T.15N. R.67W.

$\frac{1}{4}$ W.C.

S.34 S.35

LS 519 1974

Basis of Bearing - By solar observation.

I, R.L. Hudson certify that I have carefully performed or reviewed the work done on the diagrammed corner as reported on this recordation form and approve the same.

R.L. Hudson
 Signature of Surveyor

Wyoming L.S. No. 519
 Registration No.

STATE OF WYOMING,
 Office of Clerk and Recorder,
 County of Saramie

This "corner record" was filed for record on the 24 day of June, 1974, was noted on the cross-index plat and is assigned page No. _____, in book No. _____.

John B. Husman
 County Official

Cross Index No. X 17 T. 15 R. 47 Mer. 6
 _____ T. _____ R. _____ Mer. _____
 _____ T. _____ R. _____ Mer. _____
 _____ T. _____ R. _____ Mer. _____
 _____ T. _____ R. _____ Mer. _____
 _____ T. _____ R. _____ Mer. _____
 _____ T. _____ R. _____ Mer. _____

327604

Photographed
Indexed
Paisid
Assessor

The State of Wyoming }
County of Laramie } SS

This instrument was filed for record
at 10:55 o'clock A. M. on the
24 day of June
A. D. 1924 and duly recorded in
Book _____ on page _____

John B. Williams

County Clerk & Ex-Officio Register of Deeds
By *HB* Deputy